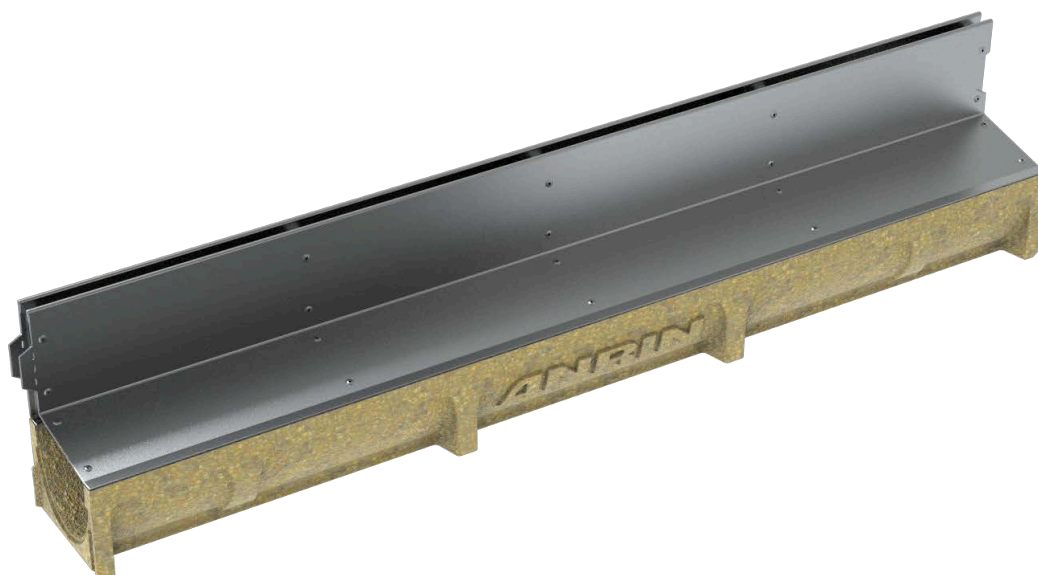


ANRIN

LEADING WATER



Technical data sheet

SELF 100
Slotted top channels

Technical data sheet

ANRIN SELF 100

Slotted top channels

ANRIN SELF slotted top channels have been specially developed for integrating drainage into high-quality natural stone and paving. The reduction to a discreet inlet slot in the flooring surface enables decorative surface designs without compromise. The steel shaft with smooth inner surfaces and outward fold duplication allows the stones to be placed without gaps and the inlets to be cleaned easily. Innovative design for permanently reliable function.

Product specifications

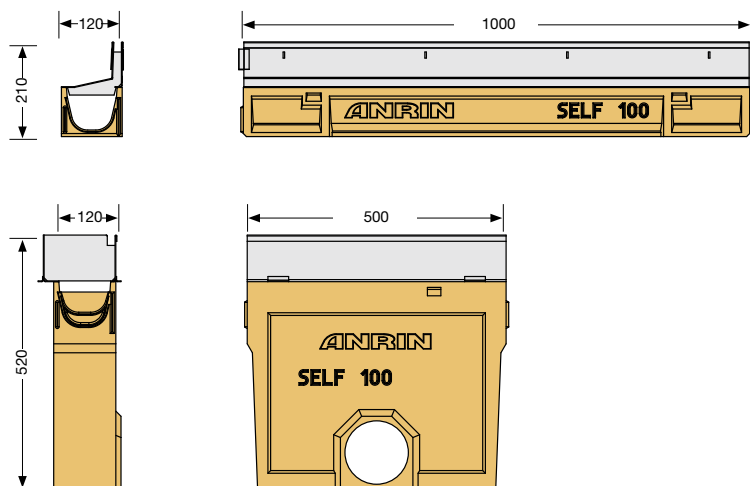
Product specifications	SELF-100 slot (channel bottom part)	SELF-100 slot sump unit (bottom part)
Material	Resin concrete	Resin concrete
Length	50 cm and 100 cm	50 cm
Width	12 cm	12 cm
Height	10 cm	49 cm
Weight	4.5/8.0 kg	19.4 kg
Nominal width	100 mm	100 mm
Joint type	UNILINK® joint	UNILINK® joint
Load capacity	Drivable	Drivable
Slotted top	Steel	Steel

Material properties

Channel / component body	
Polymer concrete	polyester resin-based with mineral aggregates, additives
Compressive strength	≥ 90 N/mm ²
Bending tensile strength	≥ 22 N/mm ²
Modulus of elasticity	ca. 25 kN/mm ²
Density	2.1 – 2.3 g/dm ³
Heat resistance	100° C (permanent loading)
Frost resistance	- 50° C
Water penetration depth	0 mm
Water absorption	0,05 %
Slotted top	
Slotted top	Steel

Technical data sheet
ANRIN SELF 100
Slotted top channels

Channel dimensions



Technical data sheet

ANRIN SELF 100

Slotted top channels

Channel types and accessories

Article no.	EAN	Designation	Length cm	Width wcm	Height cm	Weight kg
07484000	4028657022523	Channel 1,0 m incl. slotted top ***	100	12.0	21.0	11.6
07484030	4026857036098	Channel 1,0 m with Venturi-socket, incl.SELF slotted top	100	12.0	21.0	10.9
07484100	4026857024910	Channel 1,0 m incl. slotted top, with maintainance opening, left***	100	12.0	21.0	12.7
07484200	4026857024927	Channel 1,0 m incl. slotted top, with maintainance opening, right***	100	12.0	21.0	12.7
07484130	4026857036104	Channel 1,0 m with Venturi-socket, maintainance opening, left***	100	12.0	21.0	12.7
07484230	4026857036111	Channel 1,0 m with Venturi-socket, maintainance opening, right***	100	12.0	21.0	12.7
07484050	4026857026679	Channel 0,5 m incl. Slotted top**	50	12.0	21.0	6.0
07485000	4028657022530	Channel 0,5 m incl. access opening **	50	12.0	21.0	8.3
07484040	4026857036180	Channel 1,0 m incl. slotted top and access opening	100	12.0	21.0	13.7
07486000	4028657022547	Sump unit incl. access essay	50	12.0	52.0	19.5
02509020	4026857020097	Revision hook pair, for removal of the revision essays				
07297200	4026857021384	End cap PP, closed, grey				
07297300	4026857034490	End cap PP, closed, black				
07298200	4026857021391	End cap PP with pipe connection DA/OD 110, grey				
07298300	4026857034513	End cap PP with pipe connection DA/OD 110, black				
07809000	4026857034599	SELF 100 SMART leaf mesh				
07809001	4026857034698	SELF 100 SMART Venturi-insert pre-assembled				
07809002	4026857036319	SELF 100 SMART Venturi-socket horizontal with shutter flap				

** Channel with sidewise perforations for the connection of t-junctions, elbow joints and cross-over joints

*** Every 2nd channel with perforation DA/OD 110 for vertical outlet

Technical data sheet

ANRIN SELF 100

Slotted top channels

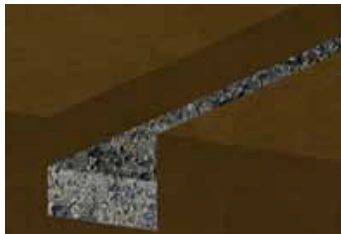
Installation instructions

The following installation guidelines are schematic representations. These are provided as examples and are non-binding. The information provided here is based on our long-term experience in excavation and road construction as well as the state-of-the-art technology.

Despite this, designers and planners are always obligated to check the products and the installation instructions for their appropriateness. The example details are simplified recommendations for execution. Constructions are to be re-created on a project-specific basis.

Important: Insert gratings for the installation.

Installation instructions



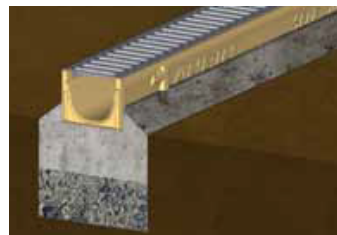
1. Dig out the trench.
Fill in and pre-condense the base course.



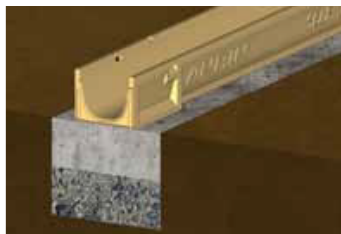
2. Connect pipe connections to the pipeline and align the components evenly.
Fill concrete bed.



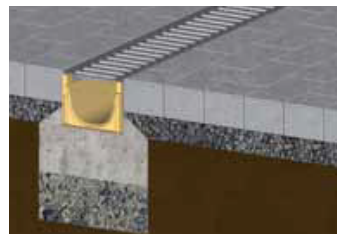
3. Fill concrete, 3 parts sand + 1 part water + 1 part cement, into the base of the trench.



4. Place cover gratings on the channels.



5. Position channel string, sump unit and end cap on the concrete bed.



6. Install paving. The layer should end 2 to 5 mm higher than the cover grating.



ANRIN GmbH
Siemensstr. 1
59609 Anröchte
Germany

+49 (0) 29 47.97 81-0
www.anrin.com
info@anrin.com